



34 Bermuda Holiday Park Newport Road

Hemsby, Great Yarmouth, NR29 4NN

£22,000



34 Bermuda Holiday Park Newport Road

Hemsby, Great Yarmouth, NR29 4NN

Aldreds are pleased to offer this nicely positioned, two bedroom end terraced holiday chalet situated on the popular Bermuda Holiday Park. The accommodation comprises of an open plan living room/kitchen, two double bedrooms, bathroom and cloakroom. Outside the chalet faces a westerly direction in a quiet corner of the site. The chalet also benefits from double glazed windows and is being sold equipped with contents and would make an ideal investment property.

Living Room

12'0" x 11'4" (3.66 x 3.45 (3.67 x 3.46))

Double glazed entrance door, double glazed window to front aspect, moulded fire surround with electric fire, sofa and armchair, power points, tv point, built in cupboard, doors leading off and open plan access to:-

Kitchen

7'1" x 5'8" (2.16 x 1.73 (2.17 x 1.75))

Double glazed window to front aspect, fitted white kitchen units with wall and matching base units with roll top work surfaces and tiled splashbacks, stainless steel sink and drainer with mixer tap over, power points, electric cooker, washing machine, vinyl flooring.

Bathroom

Frosted double glazed window to side aspect, panelled bath with tiled surround and electric shower over, pedestal hand wash basin with tiled splashback, door to:

Separate WC

Frosted double glazed window to side aspect, low level WC.

Bedroom 1

9'3" x 8'1" (2.82 x 2.48)

Double glazed window to rear aspect, power points, wall mounted electric panel heater, built in wardrobe cupboard, two sets of bunk beds, fitted carpet.





Bedroom 2

8'1" x 8'1" (2.48 x 2.48)

Double glazed window to rear aspect, built in wardrobe, cupboard, power points, wall mounted electric panel heater, fitted carpet.

Outside

The property benefits from communal lawned grounds with a westerly facing aspect to the front, parking and use of on site facilities.

Tenure

Leasehold - 99 Year lease from 1 May 1977 - 51 years remaining
Ground Rent and Site fees - 2025/2026 approximately £1750.00

Services

Mains water, electricity, drainage.

Council Tax

Great Yarmouth Borough Council - Band 'A'

Location

Hemsby is a coastal village approximately 7 miles north of Great Yarmouth * There is a variety of shops * Post Office * Medical centre * First school with older children attending the Middle and High schools in Martham * a school bus service link the coastal village with Great Yarmouth.

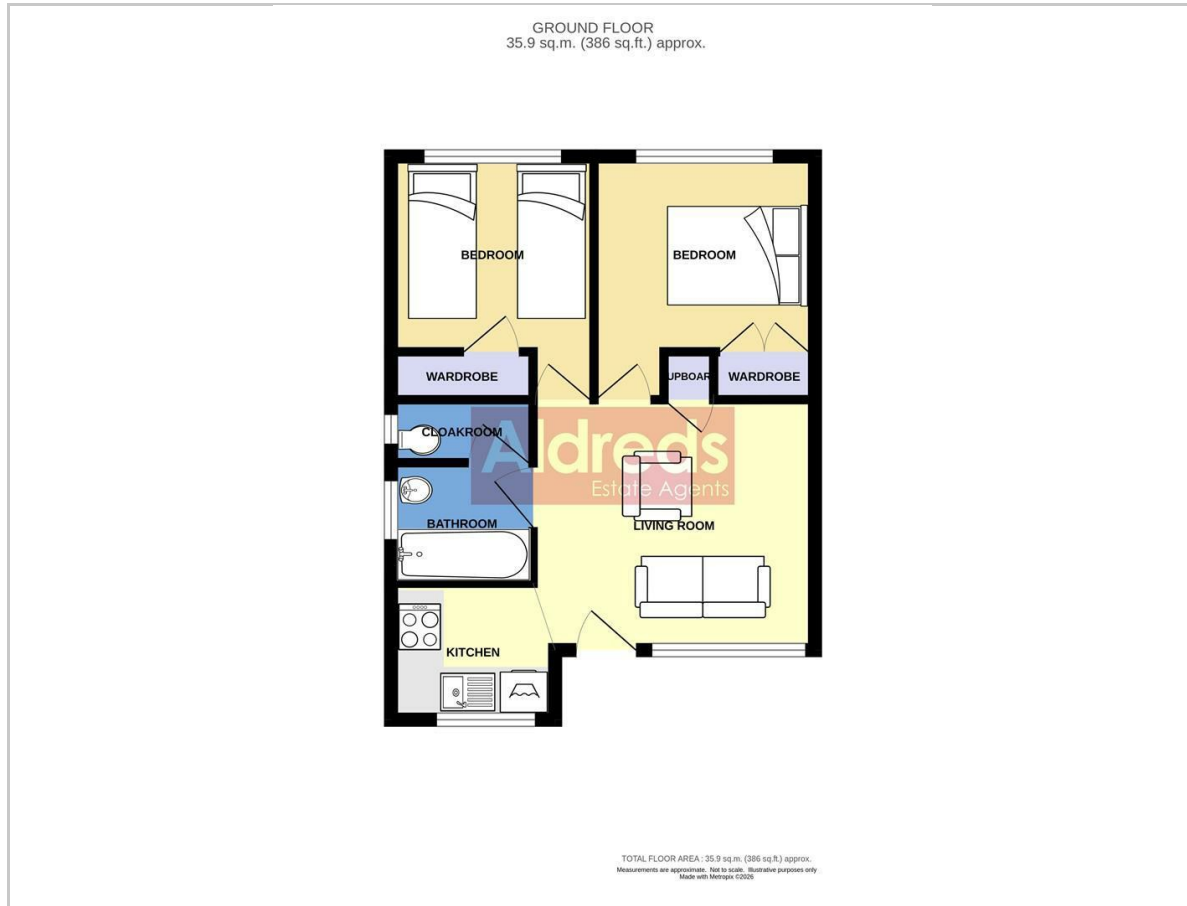
Directions

On arriving in the village of Hemsby from Great Yarmouth, turn right into Newport Road, turn left into Bermuda Holiday Park, continue straight ahead before turning left where parking is available, where the property can be found directly ahead to the left hand side.

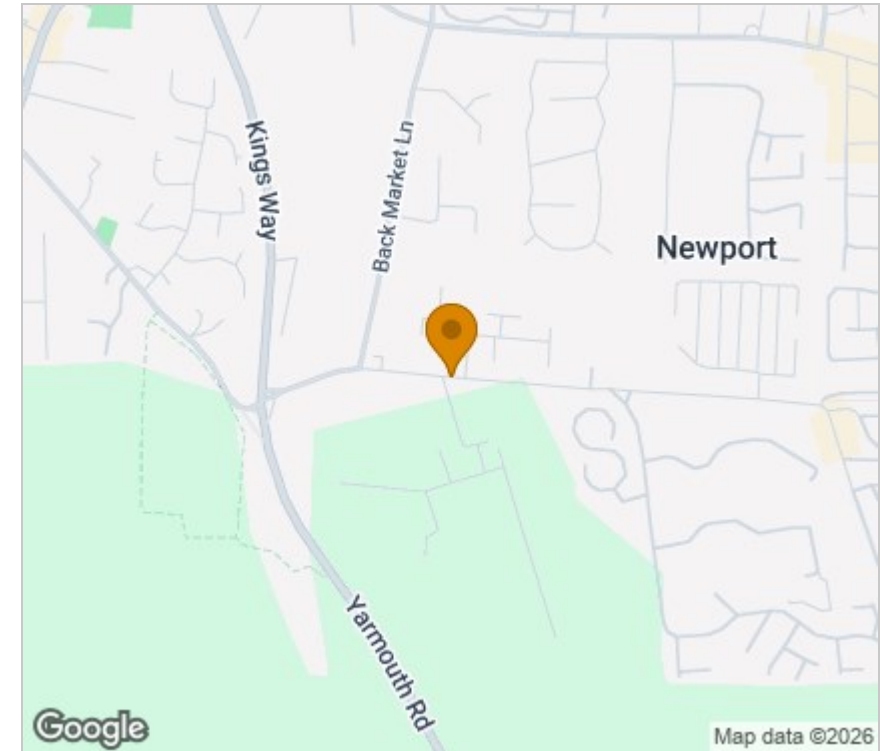
Ref: Y12646/02/26/CF



Floor Plan



Area Map



Viewing

Please contact our Aldreds Great Yarmouth Office on 01493 844891 if you wish to arrange a viewing appointment for this property or require further information.

Disclaimer

These particulars are issued on an understanding that all negotiations shall be conducted through Messrs. Aldreds. Please note: Messrs. Aldreds for themselves and for the vendors or lessors of this property whose agents they are given notice that: 1. Particulars are set out as a general outline only for guidance of intending purchasers or lessees, and do not constitute nor constitute part of, an offer or contract. 2. All descriptions, dimensions, references to condition and necessary permissions for use and occupation, and other details are given without responsibility and any intending purchasers or tenants should not rely on them as statements or representations of fact but must satisfy themselves by inspection or otherwise as to the correctness of each of them. 3. No person in the employment of Messrs. Aldreds has any authority to make or give any representation or warranty whatever in relation to this property. 4. If you are proposing to visit the property and are travelling some distance please check with Aldreds on the issue of availability prior to travelling. 5. Aldreds Property Consultants and associated services may offer additional services to the prospective purchaser for which they will be entitled to receive a commission.

Aldreds are pleased to be working with Mortgage Advice Bureau. They're an award-winning mortgage broker with over 1,400 advisers across the UK, and have access to over 12,000 mortgage products from over 90 lenders. Aldreds Estate Agents Ltd receive a commission of £200 on each completed case. Your home may be repossessed if you do not keep up repayments on your mortgage. There may be a fee for mortgage advice. The actual amount you pay will depend upon your circumstances. The fee is up to 1%, but a typical fee is 0.3% of the amount borrowed. Mortgage Advice Bureau is a trading name of Mortgage Seeker Limited which is an appointed representative of Mortgage Advice Bureau Limited and Mortgage Advice Bureau (Derby) Limited which are authorised and regulated by the Financial Conduct Authority. Mortgage Seeker Limited Registered Office: Lovewell Blake, Sixty Six North Quay, Great Yarmouth, Norfolk, NR30 1HE. Registered in England Number: 03721415. 6. Potential purchasers should check with their providers that the broadband and mobile phone coverage they would require is available.

17 Hall Quay, Great Yarmouth, Norfolk, NR30 1HJ

Tel: 01493 844891 Email: yarmouth@aldreds.co.uk <https://www.aldreds.co.uk/>

Registered in England Reg. No. 08945751 Registered Office: 17 Hall Quay, Great Yarmouth, Norfolk NR30 1HJ

Directors: Mark Duffield B.S.c. FRICS. Dan Crawley MNAEA Paul Lambert MNAEA